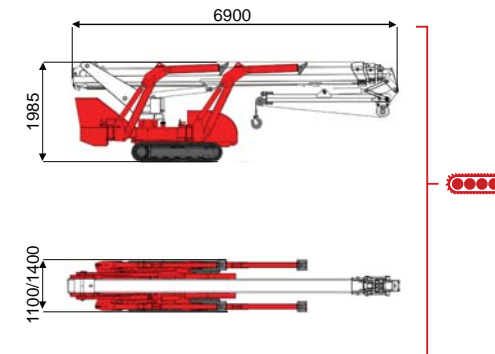
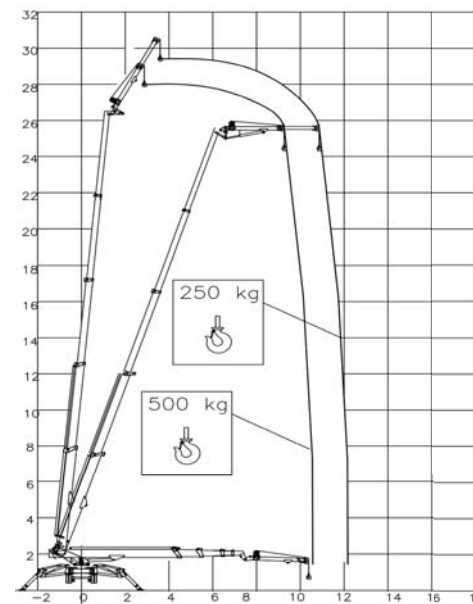




29,5 m ↑
12,3 m →
500 Kg ⚙️



BI-ENERGY
Diesel+AC



XTJ 32/C-R 29,5 m 12,3 m 500 kg 540° 4,7 m 15% 40% 3,0 km/h 5940 kg 35 kN 2,62 kN/m² 4,53 kN/m² 1100/1400 mm 6900 mm 1985 mm

		Battery type	Battery charge	Add. Weight	Autonomy	Charging time	Electropump	
ECO	DC+AC		48V 320 A/h 5h	230V-48V 45A	450 kg	6-7 h endless	7h	48V 12 kW
ECO	DC+AC		48V 270 A/h 5h	230V-48V 45A	400 kg	6-7 h endless	7h	48V 9 kW
HYBRID	Diesel+DC		24V 240 A/h 5h	230V-24V 35A	200 kg	2-3 h endless	7h	24V 5,5 kW

Characteristics and technical data are informative only and subjected to change without notice.

TCA Lifting Ltd
Unit 4, Derby Dell Buildings, Lasham
Hampshire. GU34 5RX United Kingdom
Tel. (+44) 0845 603 5360
info@tcalifting.com
www.tcalifting.com

